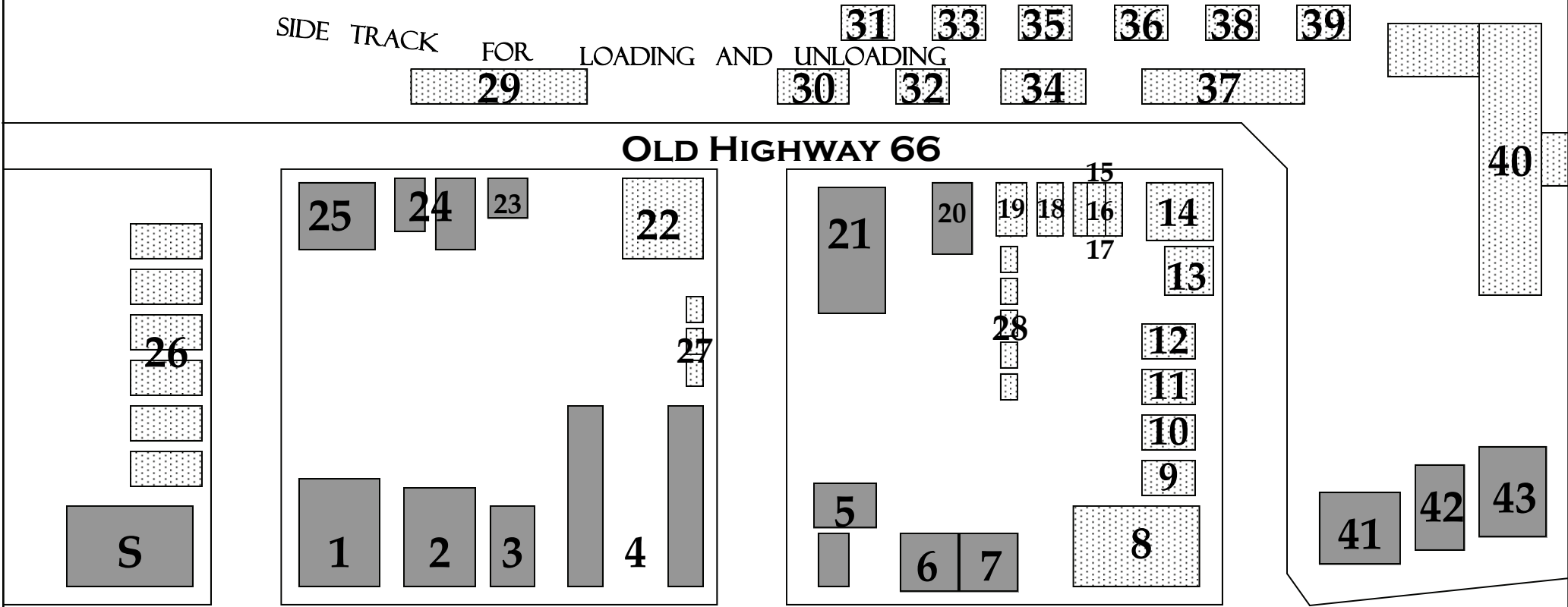


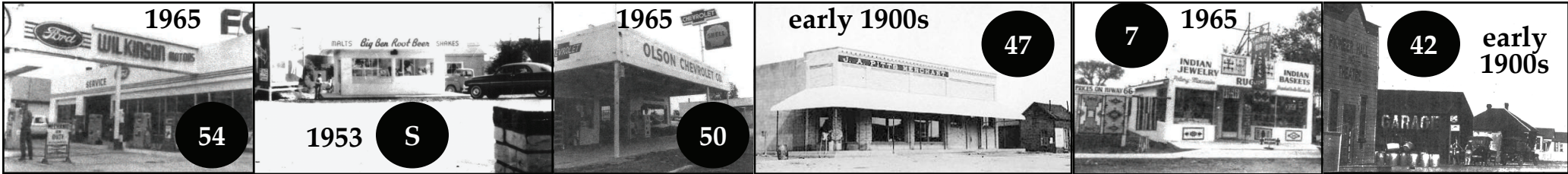
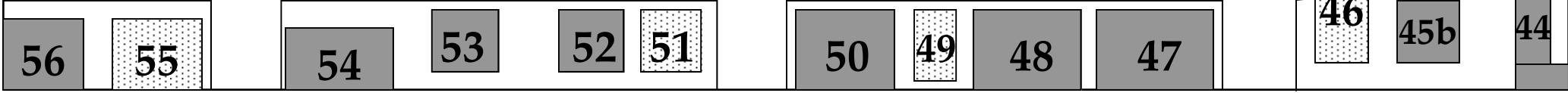


Atchison, Topeka & Santa Fe Railroad

SIDE TRACK FOR LOADING AND UNLOADING



HISTORIC ROUTE 66



Start your Tour at the Snow Cap, you can't miss it !

(X – denotes building is no longer standing)

- S. Delgadillo's Snow Cap (1953)
1. D&M Garage (1949) & Delgadillo Grocery
2. Delgadillo's Barber Shop & Historic Route 66 Visitor Center (1914). Original cost – \$1,200
3. Private Home (c1925)
4. Deluxe Motel (1932)
5. Shell Gas Station (c1961) & Bus Stop
6. Miller's Dry Cleaning (1935); Rainbow Café; Hardware Store
7. Thunderbird Indian Store (c1955)
8. X – Corner Bar & Hotel (1928-1962)
9. X – H&J Restaurant (destroyed by fire 1974)
10. X – Bowling Alley (destroyed by fire 1974)
11. X – Shorty's Magazines (burnt down 1974)
12. X – Bar, Town Tavern & Barber Shop
13. X – Barber & Beauty Shop
14. X – Hotel, Drug Store, Casino & Brothel (1903-1952)
15. X – Chinese Restaurant
16. X – John King's Barber Shop
17. X – Clothing Store
18. X – Camilo Arduos Restaurant
19. X – Bud Brown's Gambling Hall & Brothel
20. Original Delgadillo Barber Shop & Pool Hall (1923)
21. Old Seligman Garage & Bus Stop (1905)
22. X – Frank Smith's Gas & Groceries
23. Private Home (c1900)
24. Delgadillo Home (1920)
25. Standard Oil Gas Bulk Plant (1920)
26. X – Rental cabins for shepherders
- 27-28. X – "Cribs" for prostitution (1920s-30s)
29. X – Warehouse for store at Main & 66
30. X – Ice Storage (burned down in 1930)
31. X – East Train Supply Room
32. X – Santa Fe Bull Lawman Office & Hobo Jail
33. X – Car Inspector's Shack (RR cars & wheels)
34. X – Home Supply Commissary
35. X – Rest Rooms for Santa Fe employees
36. X – Dispatcher's Office
37. X – Loading Dock for Automobiles/Warehouse
38. X – Crewman's Office
39. X – Passenger Train Ticket Office
40. X – Fred Harvey Hotel & Restaurant "The Havasu" (1905-1954) (torn down 2008)
41. Copper Cart Restaurant (1951)
42. Pioneer Hall & Theatre; Drugstore (1905)
43. Studebaker Agency; Seligman Garage (1934)
44. Nomad Motel (1962)
45. a. X – Original Black Cat Bar (1935-1963)
b. New Black Cat Bar built because Route 66 was going to be widened (1963)
46. X – Kincaid's Diner (1935-1962)
47. Pitts & Washington; Central Commercial Department Store (1903)
48. Canyon Shadows Motel (1963)
49. X – Chinese Restaurant (moved from #15)
50. Dr. Conner's Garage; Olson's Chevrolet (1933)
51. X – Smith's Groceries #2 (moved from #22)
52. Private Residence (c1928)
53. Private Residence (1929)
54. Donovan's Garage; Wilkinson Motors (1933)
55. X – White Horse Cafe
56. Aztec Motel (1915 with 1955 additions)

A Walking Tour Guide To Historic Seligman

Seligman, Arizona was established in 1886 as the connecting point of the Atchison, Topeka and Santa Fe Railroad with a long abandoned rail line extending south to Prescott. Later, Seligman gained fame as a welcome stop on the Mother Road, U.S. Route 66, which still runs through the heart of Seligman today.

This walking tour takes about 20 minutes and guides you through the original center of Seligman. On the walk you will see structures built as early as 1900, and the locations where numerous other buildings once stood during the different phases of the town. Glimpse the colorful history of a thriving railroad town and feel the friendly, comfortable atmosphere which made Seligman a welcome and notable stopping point for train and highway travelers.